

# Kamilaroi

ABN: 42 155 335 274



Offering a diverse range of premium services, meeting and exceeding your expectations



Page 3 - A Word from our Director on  
Capabilities and Commitments

Pages 4, 5 and 6 - Our Projects

Page 7 - Earthworks, Demolition and Asbestos

Page 8 - Concrete Works  
Company Structure

Page 9 - Health Safety and Environment

Page 10 - Contact Us



## A word from our Director on Capabilities and Commitment.

Providing a diverse range of services to the mining, oil and Gas, Infrastructure and Government sectors Kamilaroi Group is 100% Indigenous owned company. We offer a unique service to our clients and are firmly committed to a shared success. Shared success is dependent on genuine partnerships where the knowledge of if we succeed then our partners also succeed. We strongly believe that by communicating effectively, with open, honest and transparent relationships with all stakeholders we can achieve long term mutual goals.

Kamilaroi Group is committed to continuing to build a strong and lasting reputation for delivering the highest quality and standards, in a timely manner whilst minimising costs for both ourselves and our business partners.

Our partners in success include companies such as The Department of Finance, Archiapps, Perth Civil Earthworks, Leighton Contractors, BHP Billiton, Rio Tinto, Brierty, FMG, NRW, Main Roads WA, WA Limestone, and Emerald Quarry.

Kamilaroi Group's reputation is founded on our guiding values of; safety, passion for quality, team work, responsibility, Trust and Integrity, and Shared Success. These values are lived and breathed through all areas of our business through our people, our systems and our procedures.

With our strong connection and commitment within local communities as well as increasing Aboriginal engagement in all areas of our business Kamilaroi Group work closely with other indigenous companies to provide employment, training and upskilling opportunities as well as ongoing support and mentoring to maximise retention and sustainability.

I personally pledge my time and commitment to ensuring all contracts that are entered into with Kamilaroi Group are of the highest priority. I stand firmly on doing what we say we will do and exceeding your expectations.

Nathan Briggs

Director





## Project List

To demonstrate our experience, tabled below is a sample of Kamilaroi Group's contracts, both past and present.

Department of Finance	
<b>Client</b>	Department of Finance
<b>Location</b>	Perth Region – Western Australia
<b>Role</b>	Subcontractor
<b>Scope</b>	Numerous demolition projects and earthworks.
<b>Duration</b>	Ongoing

Archiapps	
<b>Client</b>	Archiapps
<b>Location</b>	Perth Region – Western Australia
<b>Role</b>	Subcontractor
<b>Scope</b>	Sole contractor for all concrete and earthworks
<b>Duration</b>	Ongoing

Perth Civil Earthworks	
<b>Client</b>	Perth Civil Earthworks
<b>Location</b>	Perth Region – Western Australia
<b>Role</b>	Subcontractor
<b>Scope</b>	Various Civil Projects
<b>Duration</b>	Ongoing

FMG – Pilbara Infrastructure	
<b>Client</b>	FMG
<b>Location</b>	Pilbara Region – Western Australia



<b>Role</b>	Subcontractor
<b>Scope</b>	Permanent hire of a truck, 50T float and other trailers for track & civil maintenance
<b>Duration</b>	Ongoing
<b>NRW – Roy Hill Project</b>	
<b>Client</b>	NRW
<b>Location</b>	Pilbara Region – Western Australia
<b>Role</b>	Subcontractor
<b>Scope</b>	Main supply of double side tippers for bulk earthworks & rail formation works.
<b>Duration</b>	March 2014 – April 2015
<b>Main Roads/Leightons – Gateway WA Project</b>	
<b>Client</b>	Main Roads
<b>Location</b>	Perth CBD – Western Australia
<b>Role</b>	Subcontractor
<b>Scope</b>	Major supplier of tippers, water, carts & earthmoving equipment
<b>Duration</b>	July 2013 – Ongoing
<b>WA Limestone</b>	
<b>Client</b>	WA Limestone
<b>Location</b>	Karratha (Quarry Works)
<b>Role</b>	Subcontractor
<b>Scope</b>	Supply of Double Road Trains – Cartage of quarry products to various sites
<b>Duration</b>	June 2013 – March 2014



<b>Emerald Quarry</b>	
<b>Client</b>	Emerald Quarry
<b>Location</b>	Queensland (Quarry Works)
<b>Role</b>	Subcontractor
<b>Scope</b>	Supply of Trucks – Haulage of quarry products to various construction and civil sites in Central Queensland
<b>Duration</b>	February 2012 – April 2012
<b>BHP Billiton – Port Expansion Project</b>	
<b>Client</b>	BHP Billiton
<b>Location</b>	Port Hedland – Western Australia (Construction Works)
<b>Role</b>	Subcontractor
<b>Scope</b>	Supply of Trucks – Bulk haulage of fill and quarry products to B4P port
<b>Duration</b>	August 2012 – December 2013
<b>Wheatstone Project – LNG Plant</b>	
<b>Client</b>	NRW
<b>Location</b>	Onslow – Western Australia (Construction Works)
<b>Role</b>	Subcontractor
<b>Scope</b>	Supply of Double side tippers – Bulk earthworks and Stockpiling on site
<b>Duration</b>	October 2012 – March 2013



## Earthworks

We specialise in all earthworks including bulk and detailed excavation, multi unit developments, cut and fill, site preparation, land clearing and compaction. With a large fleet of late model equipment including excavators from 1.5 – 30Tonne (with a range of attachments including rock breakers, augers and block lifters), bobcats, possi tracks, loaders, rollers and tippers. This range of equipment ensures maximum efficiency and cost effectiveness for our clients by allowing us to put the right equipment on the job. We offer all plant on a wet or dry hire basis servicing a range of clients from government departments, mining companies, civil contractors and private customers.

### Equipment available:

- Side tippers
- End tippers
- Water carts
- Hiab truck
- Quad axel float 50 Tonne
- Drop deck trailers
- Loaders
- Excavators 1.5 Tonne to 30 Tonne
- Bob cats
- Possi Track
- Rollers
- Plate compactors



## Demolition and Asbestos

Prior to any demolition project, our team of demolition experts will prepare the workplace outline method statements and risk assessments for the planned processes. We will also inform you of the sequence of events and anticipated timelines likely to be involved. We will then arrange the steps that need to be done in order to complete your demolition. We are fully committed to ensuring that all of our workplace practices adhere to all health and safety legislation, and our employees are fully trained in all safe methods of demolition work.

We take our environmental responsibilities very seriously, and every job we undertake adheres to the Environmental Protection Act. Up to 98% of all demolition waste is recycled reducing the need for land fill and minimising the impact on the environment.

We are fully licenced and insured for the removal, transportation and disposal of asbestos containing material. Such work requires highly trained personnel. Our staff work under a strict legislative framework including;

- WA occupational Safety and Health Act 1984
- WA Occupational Safety and Health Regulations 1996
- Code of Practice for Safe Removal of Asbestos 2<sup>nd</sup> Ed. NOHSC:2002(2005)
- National Code of Practice for the Management and Control of Asbestos in Workplaces [NOHSC;2018(2015)]

## Concrete works

Kamilaroi Group provides services in both metropolitan and remote areas. With our extensive plant, equipment, highly trained operators/employees and reliable contractors Kamilaroi Group are able to complete concrete works from beginning to completion allowing us to deliver outstanding value for money to our clients. From small works to entire projects Kamilaroi Group have the proven capabilities to ensure hassle free completion in a timely manner which will ensure that your project remains on schedule.

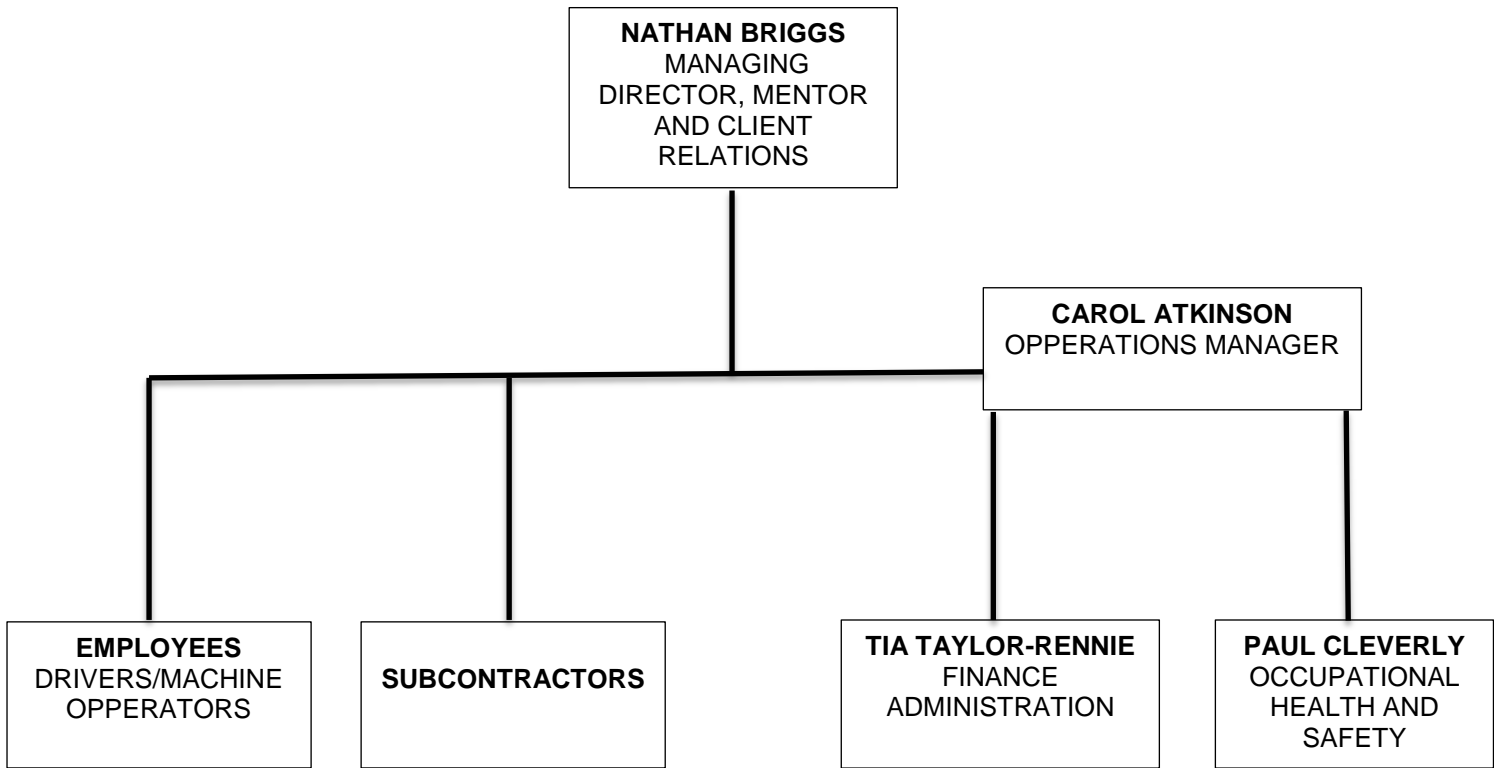
Services include;

- Concrete slabs, footings, pedestals and bunds
- High volume concrete placements
- Tilt panel and in situ concrete walls and columns
- Decorative concrete





## Company Structure



Kamilaroi Group in conjunction with IBA have advisors whom work closely in areas of:

- Accountant: Vic Letizia – Letizia Palmer Chartered Accountants
- Business Planning: Betterlink Group – Paul Morgan
- OH&S Management (Int) Pty. Ltd: Risk Management Consultants – Paul Cleverly

### Health Safety and Environment.

Kamilaroi Group is committed to ensuring that anyone who visits our work area is kept safe from all hazards and risk. By providing open and honest communication with our employees and subcontractors we instil a positive reporting culture to minimise harm and risks associated with in our working environment. We believe that by empowering our people we will achieve the best results together as a team by driving behaviours, attitudes, decisions and actions.

Kamilaroi Group is committed to ensuring that all of its operations are conducted and maintained in an environmentally sustainable and responsible manner. We do this by identifying and where practicable eliminating aspects of operations that may either pollute or degrade the surrounding environment, so that regulatory requirements are met and where possible exceeded.

To assist us in achieving a safe work environment in conjunction with our partners we provide;



- Safe work practices and procedures (safe systems of work) to ensure that all employees have a complete understanding of their surroundings as well as the job at hand.
- Providing and maintaining all equipment and Personal protective equipment (PPE).
- Ensuring ongoing information, training, guidance and supervision is provided to all employees and subcontractors.
- Consultation with employees in regards to health and safety.
- Reward and recognition.


All Kamilaroi employees and subcontractors are responsible for;

- Adhering to all safe work practices and procedures.
- Following all instructions and objectives given to them by their direct Supervisor within the scope of their role.
- Ensuring their own duty of care not to misuse, damage, or refuse to use anything provided to them for the purpose of health and safety.
- Report all known or observed hazards, incidents, injuries or near misses as soon as reasonably practicable to do so.
- Perform their work duties in a manner that promotes health and safety for themselves and those around them.

By minimising the risk of injuries and harm we aim to achieve a zero incident rating.

## CONTACT US

Kamilaroi Group Pty Ltd

 **0428 262 228 - Nathan**

 **0438 662 444 – Carol**

 **nathan@kamilaroi.com.au**

 **carol@kamilaroi.com.au**

 **info@kamilaroi.com.au**

 **www.kamilaroi.com.au**

